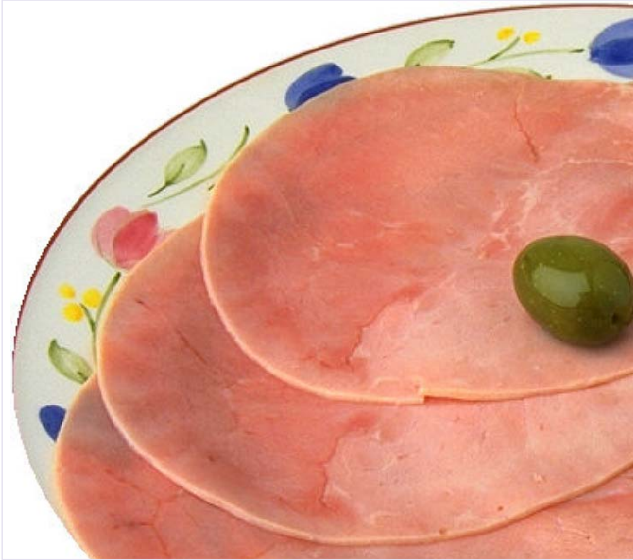


## Cures

Code	Description	UOM
13295	CURE 4 X 4 BINDER LESNIE 5.5KG (65486)	BAG
12007	CURE COMPLETE CORN BEEF B/BOY X 22.8KG (65474)	BAG
14947	CURE COMPLETE CORN BEEF B/BOY X 5.7KG (65474)	BAG
10236	CURE CORNED BEEF X 454G (65428)	EA
12102	CURE DANISH B/BOY X 18KG (65478)	BAG
14865	CURE DANISH B/BOY X 3KG (65478)	EA
12050	CURE EXTENDER PREMIX FORMULA 3 (65475) X5KG	EA
19464	CURE HAM & BACON MPC 16 X 4.5KG 16509	EA
11958	CURE HAM/BACON B/BOY X 18KG 65471	BAG
11956	CURE HAM/BACON B/BOY X 4.5KG	BAG
11954	CURE HAM/BACON HAWAIIAN B/BOY X 18KG (65751)	BAG
11951	CURE HAM/BACON HAWAIIAN B/BOY X 4.5KG	EA
11774	CURE HAM/BACON ROYAL B/BOY X 18KG (65457)	BAG
11949	CURE HAM/BACON ROYAL B/BOY X 4.5KG	BAG
10246	CURE KORNIT NITRITE X 5KG(CORN BEEF)(65430)	BKT
22085	CURE LESNIE'S CANADA CURE X 2.69KG 69562	EA
40518	CURE LESNIES HONEY DEW 4KG 69697	BAG
40506	CURE LESNIES HONEY DEW 6 X 4KG 69697	BAG
16515	CURE LESNIES MULTICURE 2 X 1.7KG 71900	BAG
40231	CURE LESNIES PINEAPPLE 500GMS 69595	PKT
18596	CURE LTC X 1.7KG 66081	EA
11947	CURE NITRITE ACTION B/BOY X 5KG (65469)	EA
12100	CURE ROAST BEEF PUMP 1.5KG #145079	BAG
39190	PHOSPHATE HYDRAPHOS 25KG SAUSAGE (69084)	BAG
17619	PHOSPHATE HYDRAPHOS 3KG SAUSAGE (65502)	BKT
38876	TENDA ROAST MEAT PUMP X 1.7KG 68919	EA



Cures and Globus Cure



Cures - NZ specific

Code	Description	UOM
30308	CURE GRIFFITH BACON & HAM X 25KG (1645)	BAG
30408	CURE GRIFFITH CORNED BEEF X 25KG (3601)	BAG
34109	CURE LESNIES HONEY-GLO X 20KG LESHONEY-GLO20	BAG
36150	CURE SPECIAL 258 X 25KG (3032)	BAG

Globus Cure

Code	Description	UOM
16517	CURE INJECTAMIX GLOBUS X 18KG #75515	BAG
38533	CURE INJECTAMIX GLOBUS X 5KG #75531	BAG

Globus Cure - NZ specific

Code	Description	UOM
33347	CURE MESSAGE G100W GLOBUS X 20KG (1704)	BAG
33351	CURE MESSAGE MP70 GLOBUS X 20KG (1868)	BAG
33353	CURE PUMPING GLOBUS X 25KG (1713)	BAG
32799	CURE RACOL BRINE MIX GLOBUS X 25KG (3029)	BAG